

Trumpet in Bb 1&2

PATRIOTIC INTERLUDE

GHS PREGAME

ARR. E. FALLS

1. AMERICA THE BEAUTIFUL

Musical notation for the first system of 'America the Beautiful'. It consists of two staves. The first staff is a treble clef with a common time signature. The second staff is a bass clef. The music features a melody in the upper voice and a supporting bass line. There are 'a2' markings above the second staff.

2. AMERICA (MY COUNTRY 'TIS OF THEE)

Musical notation for the first system of 'America (My Country 'Tis of Thee)'. It consists of a single staff with a treble clef and a 3/4 time signature. The music is a simple harmonic accompaniment. There is a '5' marking above the staff.

3. THE STAR SPANGLED BANNER

Musical notation for the first system of 'The Star Spangled Banner'. It consists of three staves. The first staff is a treble clef with a 3/4 time signature. The second and third staves are bass clefs. The music features a melody in the upper voice and a supporting bass line. There are 'a2' markings above the staves and first/second endings.

Trumpet in Bb 1&2

PATRIOTIC INTERLUDE

GHS PREGAME

ARR. E. FALLS

1. AMERICA THE BEAUTIFUL

Musical notation for the first system of 'America the Beautiful'. It consists of two staves. The first staff is a treble clef with a common time signature. The second staff is a bass clef. The music features a melody in the upper voice and a supporting bass line. There is an 'a2' marking above the second staff.

2. AMERICA (MY COUNTRY 'TIS OF THEE)

Musical notation for the first system of 'America (My Country 'Tis of Thee)'. It consists of a single staff with a treble clef and a 3/4 time signature. The music is a simple harmonic accompaniment. There is a '5' marking above the staff.

3. THE STAR SPANGLED BANNER

Musical notation for the first system of 'The Star Spangled Banner'. It consists of three staves. The first staff is a treble clef with a 3/4 time signature. The second and third staves are bass clefs. The music features a melody in the upper voice and a supporting bass line. There are 'a2' markings above the staves and first/second endings.

Horn in F

PATRIOTIC INTERLUDE

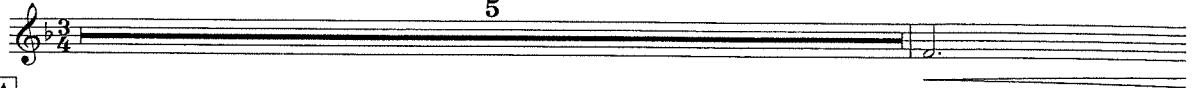
GHS PREGAME

ARR. E. FAI

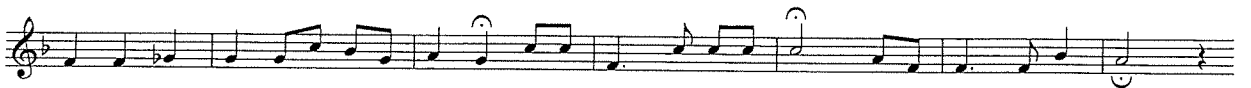
1. AMERICA THE BEAUTIFUL



2. AMERICA (MY COUNTRY TIS OF THEE)



3. THE STAR SPANGLED BANNER



Horn in F

PATRIOTIC INTERLUDE

GHS PREGAME

ARR. E. FAI

1. AMERICA THE BEAUTIFUL



2. AMERICA (MY COUNTRY TIS OF THEE)



3. THE STAR SPANGLED BANNER



Trombone

PATRIOTIC INTERLUDE

GHS PREGAME

ARR. E. FALLS

1. AMERICA THE BEAUTIFUL

Musical notation for the first piece, 'America the Beautiful', in bass clef, 3/4 time, key of B-flat major. The notation consists of two staves of music.

2. AMERICA (MY COUNTRY 'TIS OF THEE)

Musical notation for the second piece, 'America (My Country 'Tis of Thee)', in bass clef, 3/4 time, key of B-flat major. It begins with a five-measure rest and a first ending bracket. A box labeled 'A' is placed above the first staff.

3. THE STAR SPANGLED BANNER

Musical notation for the third piece, 'The Star Spangled Banner', in bass clef, 3/4 time, key of B-flat major. It includes first and second ending brackets.

Trombone

PATRIOTIC INTERLUDE

GHS PREGAME

ARR. E. FALLS

1. AMERICA THE BEAUTIFUL

Musical notation for the first piece, 'America the Beautiful', in bass clef, 3/4 time, key of B-flat major. The notation consists of two staves of music.

2. AMERICA (MY COUNTRY 'TIS OF THEE)

Musical notation for the second piece, 'America (My Country 'Tis of Thee)', in bass clef, 3/4 time, key of B-flat major. It begins with a five-measure rest and a first ending bracket. A box labeled 'A' is placed above the first staff.

3. THE STAR SPANGLED BANNER

Musical notation for the third piece, 'The Star Spangled Banner', in bass clef, 3/4 time, key of B-flat major. It includes first and second ending brackets.

Baritone

PATRIOTIC INTERLUDE

GHS PREGAME

ARR. E. FALLS

1. AMERICA THE BEAUTIFUL

Musical notation for the first piece, 'America the Beautiful', in baritone clef, 3/4 time, key of B-flat major. The piece consists of two staves of music.

2. AMERICA (MY COUNTRY 'TIS OF THEE)

Musical notation for the second piece, 'America (My Country 'Tis of Thee)', in baritone clef, 3/4 time, key of B-flat major. The piece starts with a five-measure rest and includes a first ending bracket labeled 'A'.

3. THE STAR SPANGLED BANNER

Musical notation for the third piece, 'The Star Spangled Banner', in baritone clef, 3/4 time, key of B-flat major. The piece includes first and second ending brackets.

Tuba

PATRIOTIC INTERLUDE

GHS PREGAME

ARR. E. FALLS

1. AMERICA THE BEAUTIFUL

Musical notation for the first piece, 'America the Beautiful', in tuba clef, 3/4 time, key of B-flat major. The piece consists of two staves of music.

2. AMERICA (MY COUNTRY 'TIS OF THEE)

Musical notation for the second piece, 'America (My Country 'Tis of Thee)', in tuba clef, 3/4 time, key of B-flat major. The piece starts with a five-measure rest and includes a first ending bracket labeled 'A'.

3. THE STAR SPANGLED BANNER

Musical notation for the third piece, 'The Star Spangled Banner', in tuba clef, 3/4 time, key of B-flat major. The piece includes first and second ending brackets.